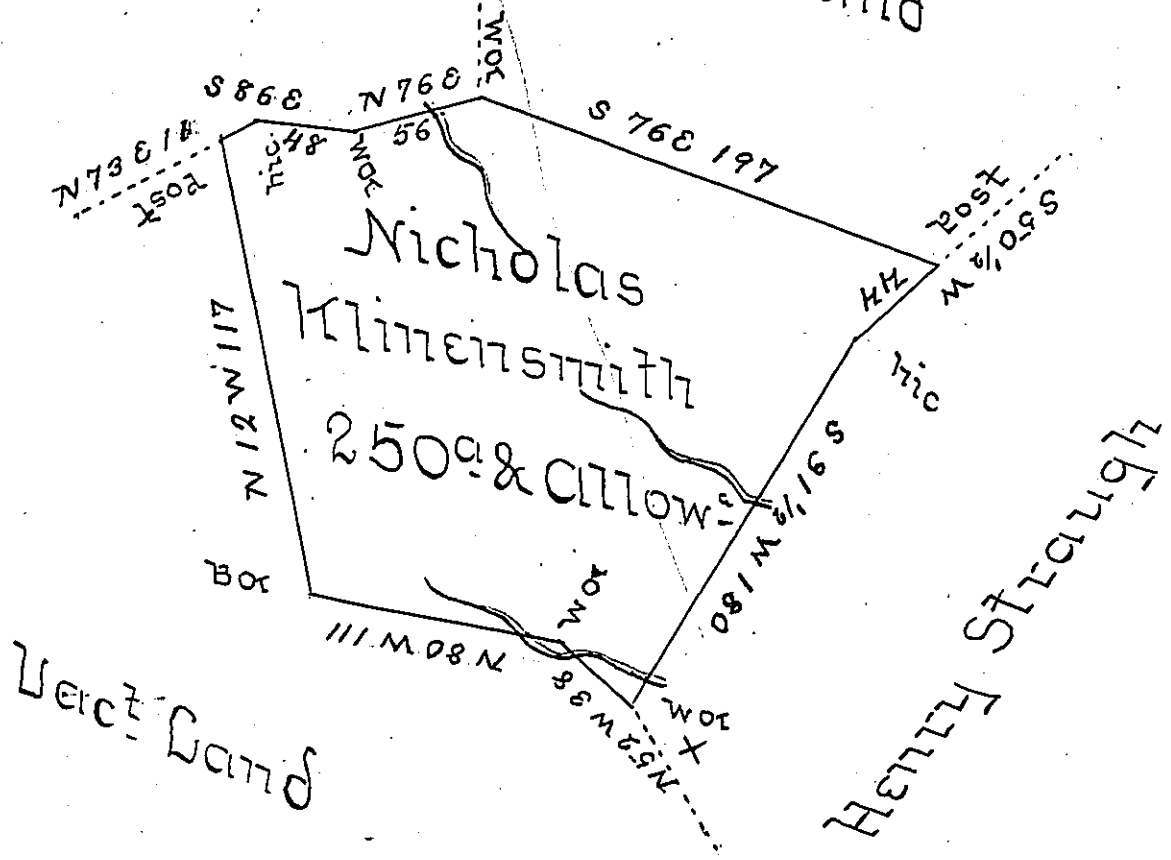


William Altman

Vac^t Land



Surveyd to Nicholas Klinensmith on the 31st day
of January 1786 The above described tract of
Two hundred & fifty acres and the usual allow-
ance of six Percent Situate on the waters of Alt-
mans Run adjoining land of William Altman
and others in Westmorland County By warrant
of the 26th day of October 1785

Joshua Elder U.S.

John Lukens Esq^r S^rgent

IN TESTIMONY that the above is a copy of the original remaining on file in
the Department of Internal Affairs of Pennsylvania, made
conformably to an Act of Assembly approved the 16th day of
February, 1833, I have hereunto set my Hand and caused
the Seal of said Department to be affixed at Harrisburg,
this Twenty fifth day of July 1905.

Loac R Brown
Secretary of Internal Affairs.